



# Product portfolio

TELOC Polska

Basic



# Personal – localization of people and goods



## Personal GPS RFID VOICE in sale since 2010

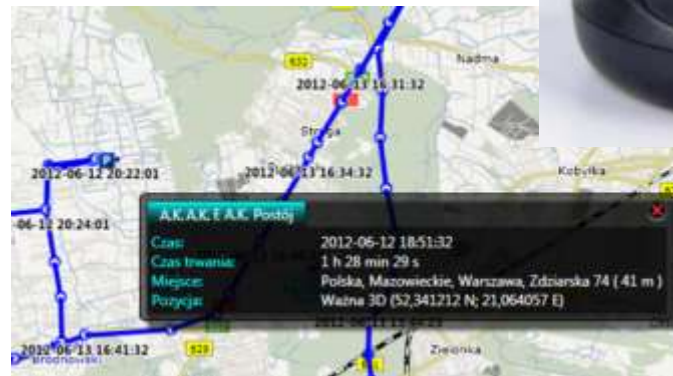
### Design for

- Monitoring people working in the field
- Monitoring valuable items
- Protection of VIPs, children, elderly patients
- Protection services (police, municipal police, rescuers)



### Benefits

- Immediate real-time location
- Messages about leaving the designated area
- Access to the history of visited sites
- Route Planning and Review
- Quick call for help
- POI Voice Information Service



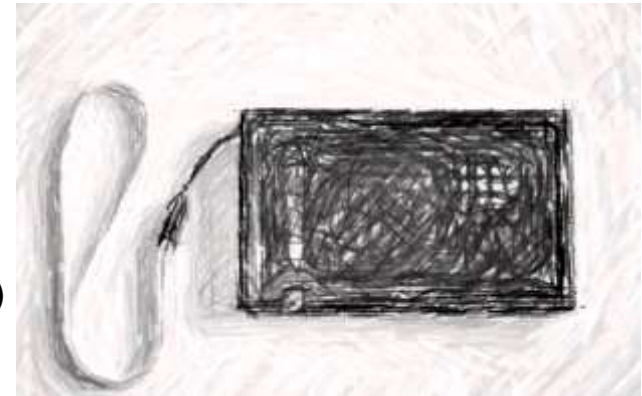
## Personal – localisation of people and goods



### Mini Personal GPS RFID 2,4 GHz + microphone – released in 2013

#### Designed for

- Monitoring people working in the field, valuable items and asset
- Working as an Alarm Control Panel with Motion Sensor tags.
- Monitoring Protection services (police, municipal police, rescuers)
- Protection of VIPs, children, elderly patients



#### **Benefits**

- RFID Long reading distance with Active Tags (more than 50m / 54 yd)
- Immediate real-time location
- De/Activating device in online mode via RFID and/or RC
- Messages about leaving the designated area by device or tag
- Access to the history of visited sites and readed tags
- Route Planning and Review by GPS and RFID
- Direct call to device also in Listening mode (microphone on board)
- Many other functionalities

# TLC – GPRS/SMS Transmitter



## TLC market experience since 2005

### Designed for

- Working as a stand-alone alarm system (control panel with remote controllers )
- Monitoring vending and gambling machines, servers and office equipment. (Square wave )
- Monitoring and controlling with the temperature (3 thermometer's, 4 LCD)
- Working as autodialer with dedicated sms messages
- Data telemetry systems , DTMF
- Transmission of signals from the monitoring and alarm systems (homes, offices, industrial facilities).
- Remote monitoring and control of industrial automation



### Benefits

- Remote reading and data transmission in GSM networks
- Keeping in contact with the working device (on-line)
- Stability and security of data
- Redundant path of communication: GPRS and SMS
- Low cost of ownership, along with cost control
- Monitoring the delivery of information and data

# Electronic GPRS and/or GPS e-lock (Padlock)



## Designed for

- Protection of machines and equipment on construction sites
- Security of transport
- Protection of small equipment in stores, at fairs
- Security of boats
- Trailer security

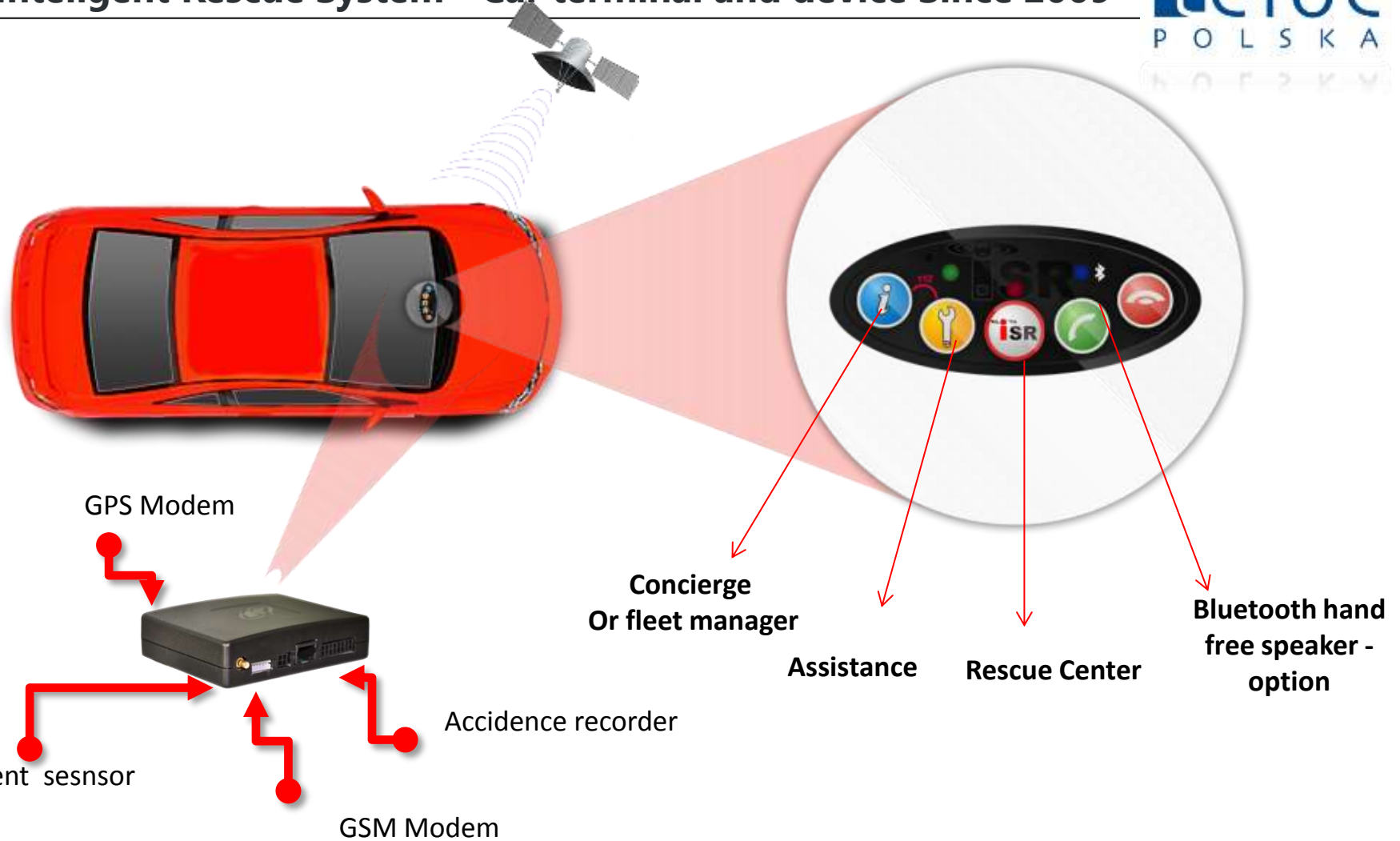


## Benefits

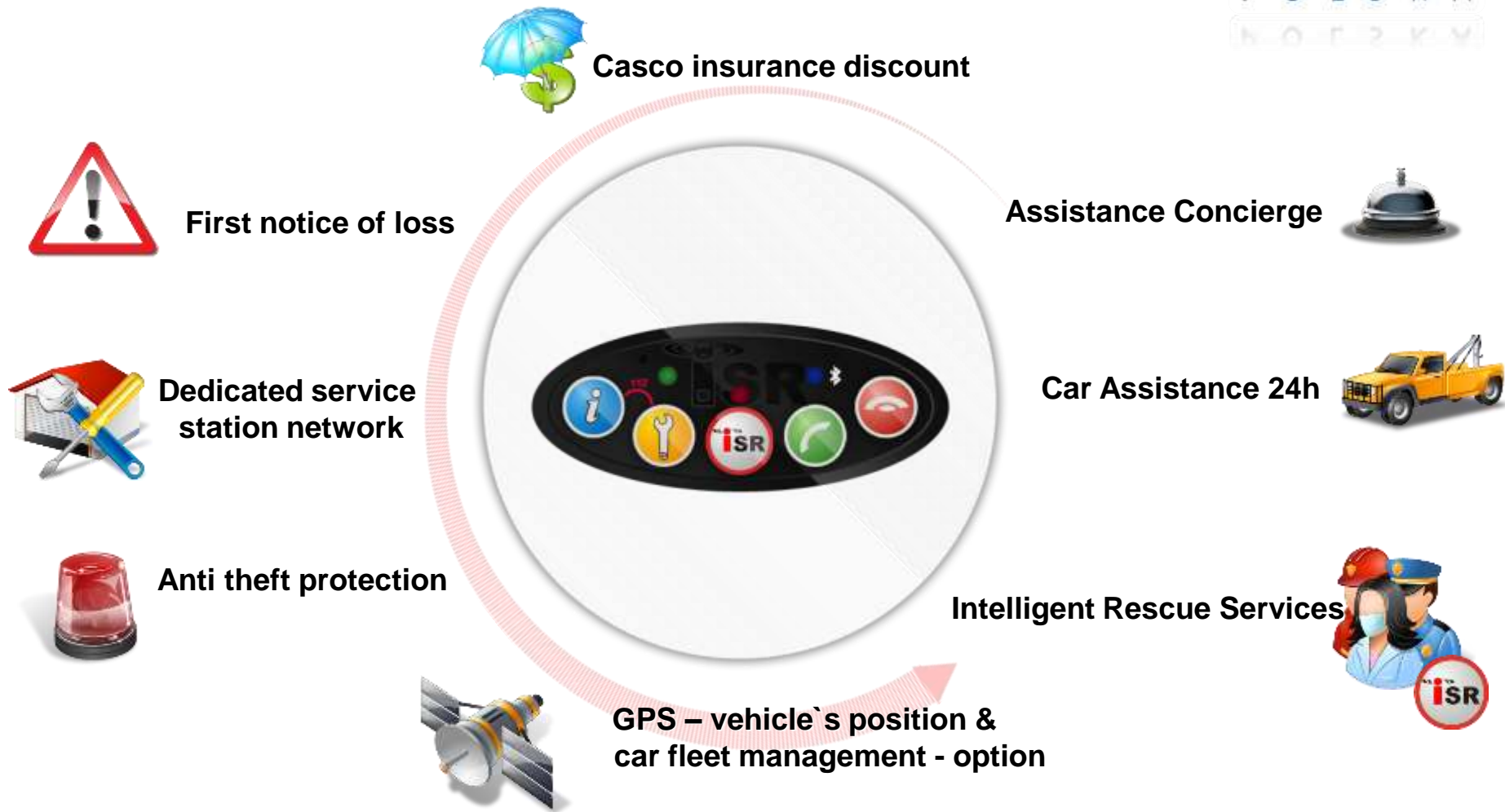
- Online contact
- The possibility of installing device temporary
- Low operating costs
- No need for installation
- Integration with other systems
- Convenient platform WebClient



# Inteligent Rescue System - Car terminal and device Since 2009



# CAR ASSIST – services for car fleets with usage example



Usage Example for Monitoring Station <http://www.youtube.com/watch?v=3X71v1csl6U>

# Intelligent Rescue System – an eCall type system



**ISR** - was created in 2009 with the assumptions of the EU eCall projected system.

The system includes 24-h monitoring centre cooperating with emergency services and a dedicated communication device with contact console mounted in the car.

With the introduction of the eCall system, this type of solution will be valid in the future within the EU. ISR on the base of the concession Ministry of Interior No L-0228/07 and PIMOT Authorization – was given the Certificate in the extended category no. 05A/BLE/SMP/10. The devices have the appropriate approvals PIMOT.

**ISR** was implemented mandatory for SUBARU and optional for customers of VW Group (VW, Skoda, Audi, Porsche), Ford and KIA. It is offered for fleet customers. ISR was also implemented for customers of leasing companies (passengers and trucks).





# ISR-M Intelligent Rescue System - for motorbikes



**ISR - Intelligent Emergency System for Motorcycles** was created to improve the safety of users of motorcycles on the road.

The project is co-funded by the European Union and developed in cooperation with the Military University of Technology (WAT) in Warsaw.

Device fitted the motorcycle and the central system monitors the behaviour of the motorcycle while driving and automatically detects incidents, accidents and falling out of the way. This allows the Monitoring Centre to immediately call emergency services to provide help.

The project was launched until the end of 2012.



# ISR



- Automatic crash detection
- Automatic crash notification
- One-button connection with Emergency Centre
- GPS crash localization
- Help and rescue – as needed



## ISR Emergency Center



Contact the nearest emergency unit  
- the location and details of events



Ambulance, Fire Brigade, Police

GPS car localization

GPS position, DATA transmission  
and Voice connection



**Automatically detected accident  
& collision or call for help**



Emergency Unit reaction

# ISR – time of reaction



**TOTAL OPERATING TIME**  
**2 min 25 sec.**



accident, collision,  
or call for help

Receiving an alarm with the  
exact GPS position of the vehicle  
and electronic data of event

**5 sek.**



Establishing the voice connection  
with car - Verification of alarm

**no contact with the driver**  
**= Automatic call for rescue**

**20 sek.**

Alert to rescue services  
located closest to  
the the car position  
including the exact GPS  
location vehicle (Police, Fire  
brigade, Ambulance)

**2 min.**

# ISR – Accidents / collisions / theft protection



## Crash detection

- Hard car bump
- Car side fall
- Rollover



## No detection signal

- Small collision
- Small deviation from linearity
- No alarm signal when the ignition is switched off



## ISR as Anti Theft System – issue detected in case:

- Wheel or back/front is lifted over 8 cm
- Towing away and wheel theft protection



# ISR – Accidence recorder

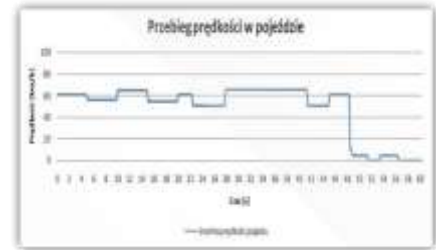
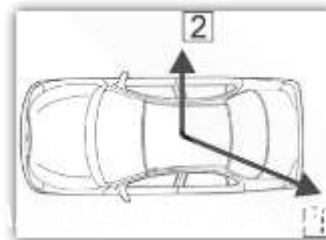


## Accident recorder

- The "black box" in the car - allows you to play out the last 60 seconds before and after the event

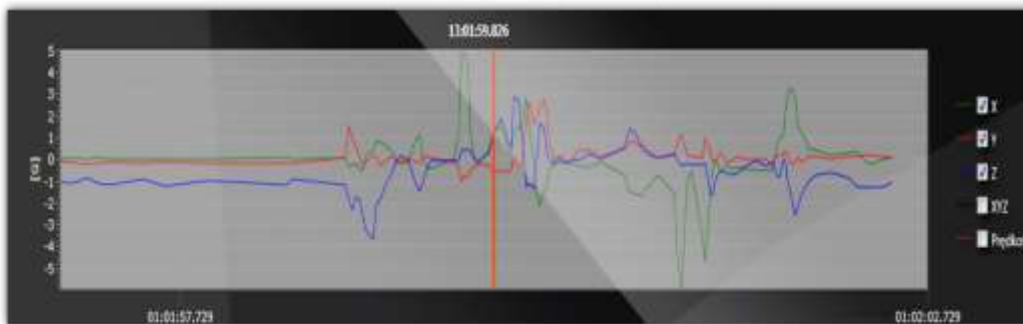


1. A strong blow to the front of the vehicle.
2. A blow to the side of the vehicle



## Visualization of events

### TEST: ANALYSIS OF ACCIDENT, roofs 37 KM / H



**COMBO ISR** is a device which will automatically recognize road accidents and collisions – and sending an alert to rescue monitoring centre to call for help. Additionally, allows for locating vehicles and read data from the CAN.



- Automatic recognition of accident
- Quick help in emergencies
- Call for help on demand
- The efficiency of and vehicle drivers
- Increasing the safety of the driver and passengers
- The possibility of obtaining insurance discounts
- Built-in speakerphone – Bluetooth
- Reading CAN parameters
- Anti-theft features

